

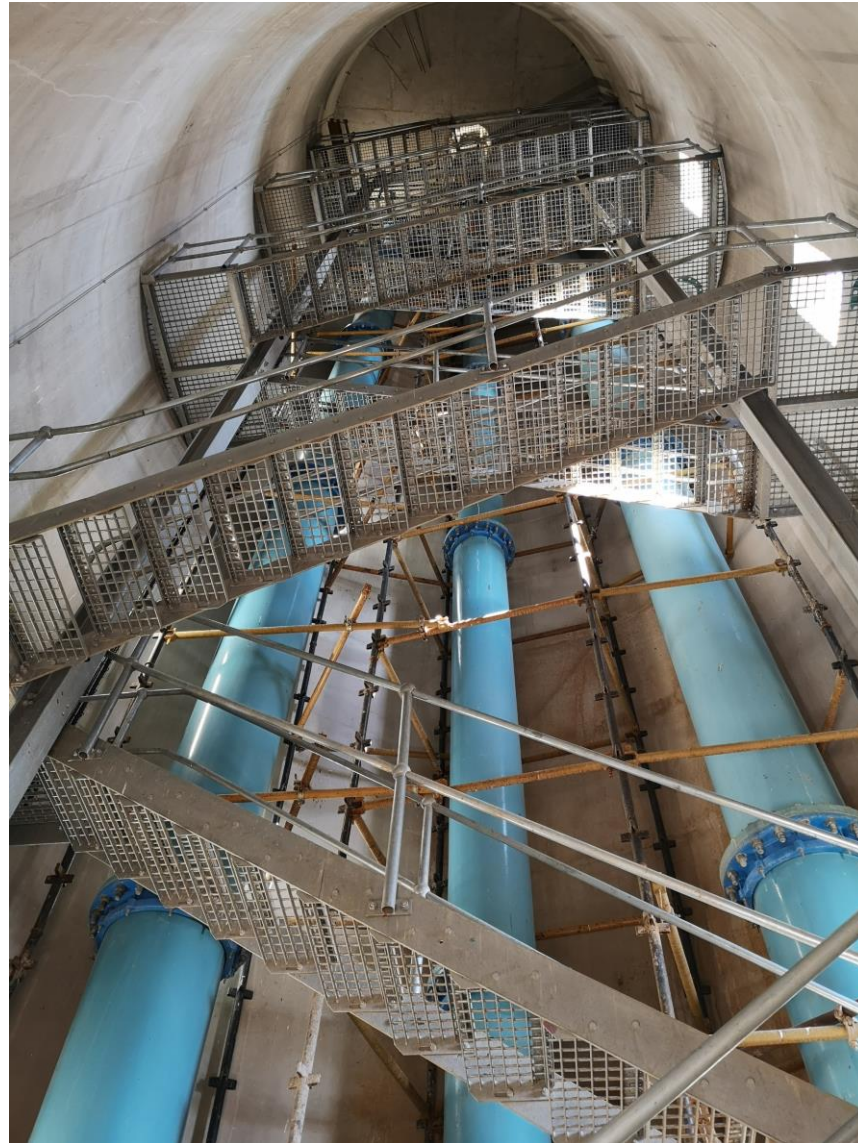
Concrete Swing-doors for Pressure Towers

Manufactured and installed by Concrete Doors and Vaults (Pty) Ltd.

Contact: Dr Nicholas Papenfus, Pr.Eng.

082 416 8958

Alabama Pressure Tower - Klerksdorp



When a pressure tower is vandalised thousands of people will soon have no water.

Fortunately, these structures invariably have thick reinforced concrete walls and so can be turned into 'vaults' simply by fitting them with a concrete high-security 'swing-door' - at a fraction of the cost of the tower and associated reticulation.

Outside view of a Swing-door



Every swing-door has:

- 60 MPa concrete
- Multiple layers of closely spaced reinforcing
- Exceptionally robust locking mechanisms

Inside View of Swing-door

Strong hinges with ball-bearings make it easy to open the door.



Double swing-doors for wider entrances – Tembe pump station, Hammanskraal



The End

Thank you for viewing

For more of our products including high security doors, lids, vaults and ventilation panels please visit

www.concretedoorsandvaults.com

Credits for the Alabama Pressure Tower

Client: Klerksdorp Municipality
Main Contractor: Ultimate Dynamic
Consulting Engineer: Andre Oelofse

Credits for Tembe Pump Station

Client: Hammanskraal Municipality
Main Contractor: Ditshimega Projects and Training
Consulting Engineer: Nevhutalu Consulting Engineers